

SPECIFICATION
Forestry Commission Practice note 8.
All native species should be of local stock. Native trees and shrubs certified as British Native plant stock.
All planting stock should comply with the Horticultural Trade Association National Plant specification.
All planting preparation, handling, planting & maintenance should be in accordance with CPSE Code for Handling and Establishing plants.
All trees and shrubs to comply with BS 3936 Part 1 1992, planted to BS 4043:1989 and BS 4428:1989.
All works generally, to comply with the written Soft Landscape Specification.
Topsoil incorporated into planting beds to be gently mounded towards the centre of each bed to allow for settlement.
On completion of planting the whole area of the shrub bed shall be mulched with 75mm consolidated thickness of medium textured decorative grade natural pine bark having first been prepared in accordance with the specification.
Free standing hedges shall have a 3 strand galvanised wire and tanalised softwood timber post fence, to BS 1722 Part 3:2000, erected along a line between the two rows of hedge plants.
All existing trees and hedges to be protected in accordance with BS5837:2012 for the duration of the construction period.

NOTE: DO NOT SCALE FROM DRAWING

Legend

- Existing trees to be retained and protected during construction
- Proposed tree planting within soft landscape, see detail on sheet 5
- Proposed climbing plants to be trained up adjacent wall/ fence/pergola with galvanised wires and hook set 250mm apart with support canes removed prior to planting
- Proposed hedge planting to be planted in a double staggered row 300mm apart and at 500mm centres in each row. To be maintained at 1m height
- Proposed mixed native hedge planting to be planted at 2 per meter. To be maintained at a 1.8m height adjacent to site boundaries
- Proposed shrub planting to receive 75mm bark mulch after planting operations
- Proposed decorative mix shrub planting to be planted in groups of 5-7no. of each species and as above
- Proposed grass areas to receive good quality amenity grass turves laid in line with good horticultural practices
- Proposed grassland areas, to be seeded with A4 grass seed mix as supplied by British Seed Houses and sown at 35 grams per msq, or similar and approved
- Proposed grassland areas, to be seeded with WF62 grass seed mix as supplied by British Seed Houses and sown at 5 grams per msq, or similar and approved
- Proposed bulb areas, to be planted in Autumn at 3 times the depth of the bulb
- Cut lines

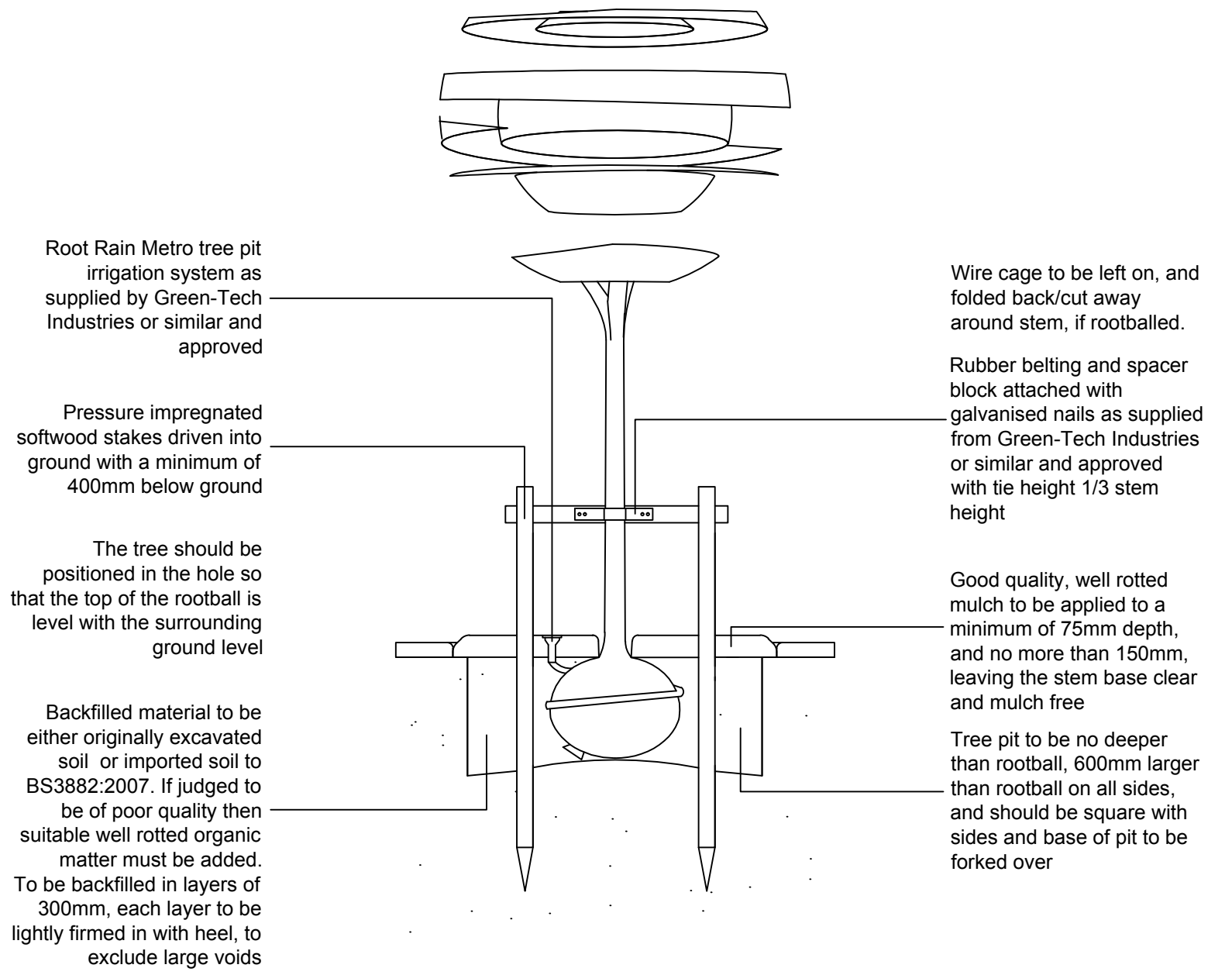
See Sheet 4 for Planting Schedule

4 3 2 1 0 2 4 6m

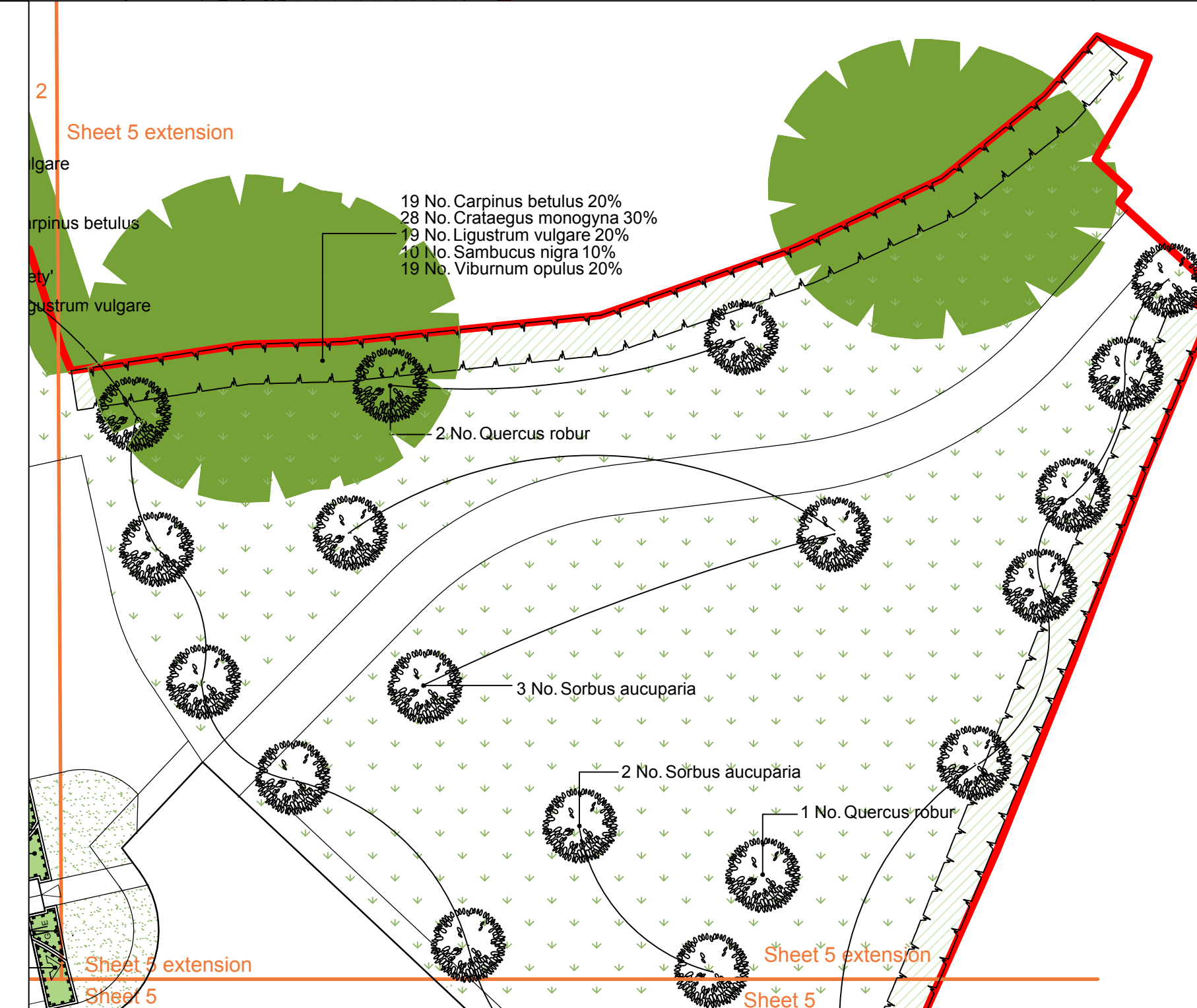


Location Plan -NTS

Tree Planting Pit Detail within Soft Landscape



All components as supplied from Green Leaf or similar and approved



ACD Ecology Arboriculture Landscape Architecture

ACD Landscape Architects & ACD Ecology
Rodbourne Rail Business Centre, Grange Lane, Malmesbury, Wiltshire, SN16 0ES
Tel: 01666 825646 Fax: 01666 824654

ACD Arboriculture
Tanners, Lower Street, Haslemere, Surrey, GU27 2PE
Tel: 01483 425714 Fax: 01428 641090

ACD (Landscape Architects) Southampton
12 Southgate Street, Winchester, Hampshire, SO23 9EF
Tel: 01962 855604
www.acdlandscape.co.uk

WAINHOMES

scheme: Land off Tregony Road, Probus
client: Wainhomes (SW) Holdings Ltd
drawing: Soft Landscape Proposals
date: September '13
scale: 1:200@A1
drawing no: WAIN18088-11B Sheet 5 of 5
drawn: AB checked: JPF

Copyright of ACD Landscape Architects Ltd. All rights described in Chapter IV of the Copyright, Designs and Patents Act 1988 have been generally asserted. 2011. Copyright of this plan remains with ACD until all fees have been paid in full.