

Important information

You can now recycle
your plastic pots, tubs
and trays



www.cornwall.gov.uk/potstubstrays

If undelivered return to:
Cornwall Council
County Hall
Treyew Road
Truro
TR1 3AY



Dear resident

We are now able to collect your plastic pots, tubs and trays for recycling!

From April 2017 you will be able to recycle your plastic pots, tubs and trays in the same recycling bag as the one you already use for plastic bottles, tins and cans.

The new collection will start from the week beginning 24 April 2017.

Everyone in your area who receives this leaflet directly through their door can start recycling these items.

Thank you for helping us to recycle more and reduce your rubbish.

What do I need to do?

- **Check the list for the all of the items that can be recycled.**
- Remember to rinse and squash plastic pots, tubs and trays before recycling.
- Put your plastic pots, tubs and trays in the bag you currently use for plastic bottles, cans and tins.
- **Start recycling plastic pots, tubs and trays from the week beginning 24 April on your normal collection day.**



Recycling collection calendar

Your recycling will be collected during the following weeks.

To check your collection day, go online at www.cornwall.gov.uk/my-area or call **0300 1234 141**.

April 2017				
M	T	W	T	F
24	25	26	27	28

May				
M	T	W	T	F
8	9	10	11	12
22	23	24	25	26

June				
M	T	W	T	F
5	6	7	8	9
19	20	21	22	23

July				
M	T	W	T	F
3	4	5	6	7
17	18	19	20	21
31				

August				
M	T	W	T	F
	1	2	3	4
14	15	16	17	18
28	29	30	31	

September				
M	T	W	T	F
				1
11	12	13	14	15
25	26	27	28	29

October				
M	T	W	T	F
9	10	11	12	13
23	24	25	26	27

November				
M	T	W	T	F
6	7	8	9	10
20	21	22	23	24

December				
M	T	W	T	F
4	5	6	7	8
18	19	20	21	22

January 2018				
M	T	W	T	F
1	2	3	4	5
15	16	17	18	19
29	30	31		

February				
M	T	W	T	F
			1	2
12	13	14	15	16
26	27	28		

March				
M	T	W	T	F
			1	2
12	13	14	15	16
26	27	28	29	30

Have your recycling available for collection from 7.00am on your collection day.

Recycling date: week 1

Frequently asked questions

When will I be able to start recycling my plastic pots, tubs and trays?

Your first collection will be during the week beginning 24 April.

Why can't you take black plastics?

The plastics are usually sorted with lasers that can identify the different types of plastic. The lasers can't "see" the black plastic and it ends up in the reject pile at the end of the process and is not recycled. We can take all other colours.

How do I order extra recycling containers?

If you need extra recycling containers to recycle the plastic pots, tubs and trays, you can order more online at www.cornwall.gov.uk/potstubstrays or call **0300 1234 141**. **Order before 24 March for delivery by 14 April.**

Where do I put the plastic pots, tubs and trays for recycling?

Plastic pots, tubs and trays can be placed in the same bag as the one you already use for plastic bottles, tins and cans.

Why are you phasing in the service?

We need time to deliver the extra bags that some people will need and to adjust to the impact of the extra material on the collection service and at the recycling depots.

By phasing in the service we can ensure that each area is working properly before moving on to the next area.

Why aren't you collecting any other plastics?

We know that there are a number of companies that will buy plastic bottles, pots, tubs and trays, so we can guarantee that if you put them out for collection they will be made into new items. We cannot be certain of this with other types of plastic, so we are not able to collect them at this time.

Need more recycling bags or a new box?

If you are new to recycling and need the containers, or think you will need an extra bag now that you can recycle plastic pots, tubs and trays, you can order them by going online:

www.cornwall.gov.uk/potstubstrays

Or you can call **0300 1234 141**

Order before 24 March for delivery by 14 April.

What can we recycle now?

✓ Yes please

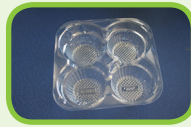
Plastic margarine tubs
Plastic ice cream tubs
Plastic yoghurt pots
Plastic biscuit and cake trays/
box inserts
Plastic meat trays
Plastic fruit and vegetable trays
Plastic moulded fruit containers
Plastic fresh soup pots
Plastic sweet/biscuit boxes
Plastic cream pots and tubs
Plastic salad bowl/pot
Plastic molded sandwich tray
Plastic lids from containers and
bottles (no film lids)

✗ No thanks

Plastic bags e.g. carrier bags,
sandwich bags
Plastic film such as cling film
Plastic oil or pesticide containers
Black plastic pots, tubs and trays.
We can take all other colours.
Expanded polystyrene
Any plastic containers larger
than 3 litres
Pet food pouches
Film lids from pots, tubs and trays
Crisp/sweet packets
Rigid plastics such as toys,
furniture or Tupperware
Plant/flower pots



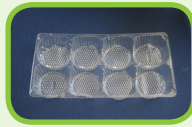
Yes please



Cake tray



Clear meat tray



Pie tray



Meat tray



Food tray



Food tray



Wash liquid bottle



Cream cheese tub



Sauce pot



Margarine tub



Noodle pot



Plastic jar



Drinks bottle



Yoghurt pot



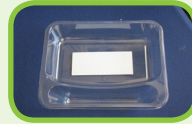
Fruit tray



Salad tub



Plastic lid



Food tray



Bacon tray



Food tray



Bottle top



Bottle tops



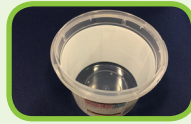
Food pot



Food tray



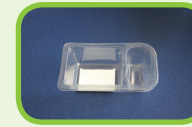
Food tray



Dessert pot



Hot drink pods



Food tray



Sandwich tray



Face cream pot



Sandwich tray



Mushroom tray



Dessert pot



Ketchup bottle



Coffee cup lid



Drinks bottle



Food tray



Fruit tray



Meat tray



Food tray



Wrap tray



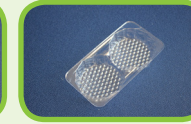
Yoghurt pot



Sauce pot



Bottle top



Cake tray



Food tray



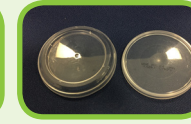
Fruit punnet



Food tub



Sandwich tray



Plastic lids



Plastic tub



Plastic tub

No thanks



Black cake tray



Black tray



Pet food pouch



Food packet



Pill blister pack



Biscuit wrapper



Food packet



Coffee packet



Milk shake packet



Crisp packet



Cereal bar wrapper



Black meat tray



Plastic bag



Black tray



Black tub



Crisp packet



Coffee refill packet



Pet food pouch



Food packet



Savoury packet



Food packet



Sweet packet